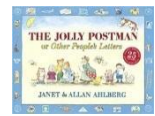


Parent Leaflet Autumn 1



Classes: Penguins and Sea turtles

Topic- How do fairy tale characters live together?

Our power of reading text is 'The Jolly Postman'

Our learning this half term:

In Maths we will be exploring numbers to 20, including counting, number recognition, writing and reading numbers as well as exploring strategies for addition.

In all our learning this term will link into answering the question 'How do fairy tale characters live together?'

We will be using the power of reading text 'The Jolly Postman' to explore and retell a range of traditional tales.

Other learning will include:

- Letter writing
- Making predictions
- Identifying and planning routes around the local area
- Exploring the roles of people in our and the traditional tale community.
- Exploring the human body and senses.
- Planning and preparing for Cinderella's ball

Ongoing learning:

- Reinforcing class and school rules and expectations through PSHE and circle time activities.
- Phonics, reading, handwriting, mental arithmetic

Key dates or things to remember:

- PE Days: Both classes Tuesday PM.
- Forest School for children in group A (Penguins & Seaturtles) Mondays AM. See dojo for more details.
- Please NAME all uniform, especially jumpers and cardigans.
- All children should bring a bottle of water to school, which can be filled up throughout the day. **ONLY WATER** please, no juices.

Useful ways to support learning at home:

- Regular reading (3x weekly). Please upload a post to your child's portfolio

detailing how many times your child has read during the week.

- Regular use of Numbots (3x weekly)
- Regular use of Spelling Shed/Phonics Play (2x weekly)